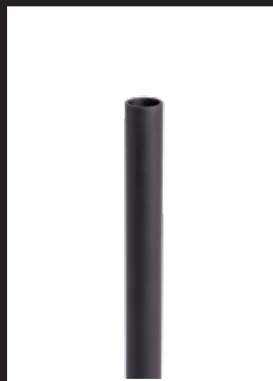


## QUICK INSTALLATION GUIDE



1. Cut balusters to length



2. Drill handrail



3. Drill cap/tread

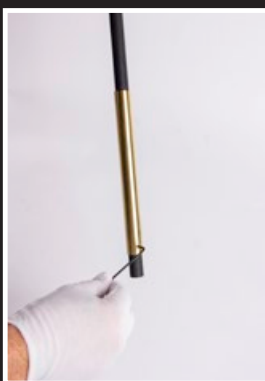


4. Epoxy handrail and cap/tread

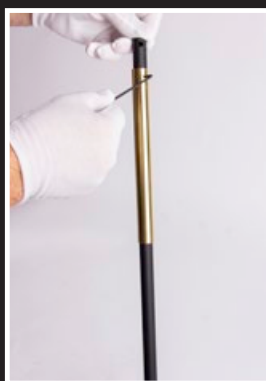
**We highly recommend using gloves when handling brass components**



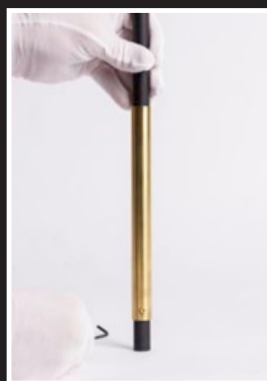
5. Loosen set screws before placing on balusters



6. Tighten set screws so that sleeve is 3" from bottom

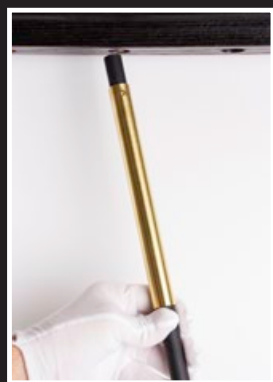


7. Tighten set screws so that sleeve is 3" from top (optional)

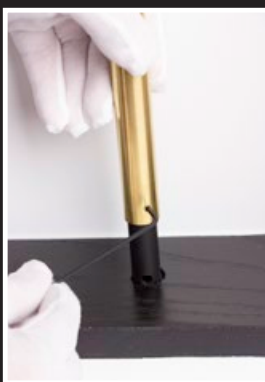


8. Sleeves are temporarily tightened in position on balusters and ready to install

**Our brass components are passivated to minimize tarnishing when properly handled.**



9. Insert into handrail and cap/tread



10. Loosen set screws and adjust sleeves to top and bottom



11. Sleeves are now in place, rotate balusters into position so set screws are facing desired direction before epoxy cures



12. Repeat