



 **FORESTKRAFT**<sup>TM</sup>  
WOOD STAIR & RAILING PRODUCTS







1. *love the square cap*



## design guide

1. Pick your newels
2. Pick your handrail & accessories
3. Pick your infill (balusters, cable, bars)



*white oak*

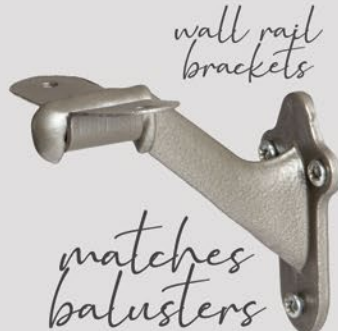


*add base*

2.



*passes code*



*wall rail brackets*

*matches balusters*



*rosette*

3.



*Ash Grey*

**FOUNDATION**  
BALUSTERS



*✓ in budget*



for more design inspiration  
visit [www.houseofforgings.net](http://www.houseofforgings.net)



# **FORESTKRAFT™** WOOD STAIR & RAILING PRODUCTS

## **Box Newels**    Non removable caps - Stocked in Red Oak and White Oak



## **Routed Newels**    Non removable caps - Stocked in Red Oak and White Oak





## Blank Newel Caps

Available for: 3-1/4" and 5-1/2" blank newels  
Stocked in Red Oak and White Oak - Sold separately



**3-1/4"**  
Square  
Newels

**SQUARE CAP-4000**  
HT. 1-3/4"  
W= 3-1/4"

**PYRAMID CAP-4000**  
HT. 1-9/16"  
W= 3-1/4"

**STACKED CAP-4000**  
HT. 2-1/4"  
W= 3-1/4"

**COVE CAP-4000**  
HT. 2-1/2"  
W= 4-5/8"

**5-1/2"**  
Square  
Newels

**SQUARE CAP-5000**  
HT. 2"  
W= 5-1/2"

**PYRAMID CAP-5000**  
HT. 1-5/8"  
W= 5-1/2"

**STACKED CAP-5000**  
HT. 2-3/4"  
W= 5-1/2"

**COVE CAP-5000**  
HT. 2-7/8"  
W= 6-7/8"

## Newel Bases

Stocked in Red Oak  
and White Oak



## Blank Newels

Stocked in Red Oak and White Oak



Blank  
Newel  
**4000**  
HT. 54"  
W= 3-1/4"  
SOLID

Blank  
Newel  
**5000**  
HT. 56"  
W= 5-1/2"  
SOLID

Blank  
Stabilizer Newel  
**4000-SP**  
HT. 43"  
W= 3"  
SOLID

Blank  
Baluster  
**4913-41**  
HT. 41"  
W= 1-1/4"  
SOLID  
  
**4923-41**  
HT. 41"  
W= 1-3/4"  
SOLID



## Blank Newel Options: Caps / Bases

3-1/4" and 5-1/2" blank newels shown with optional bases and caps - sold separately  
Additional configuration options available.



Shown with optional base (sold separately)

Shown with optional square cap (sold separately)

Shown with optional base and square cap (sold separately)

Shown with optional pyramid cap (sold separately)

Shown with optional base and pyramid cap (sold separately)

Shown with optional stacked cap (sold separately)

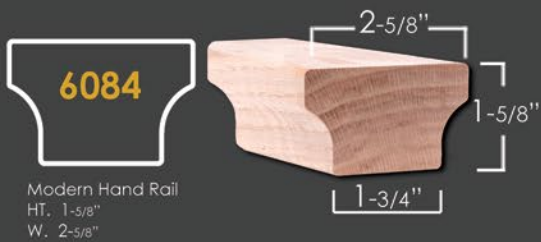
Shown with optional base and stacked cap (sold separately)

Shown with optional cove cap (sold separately)

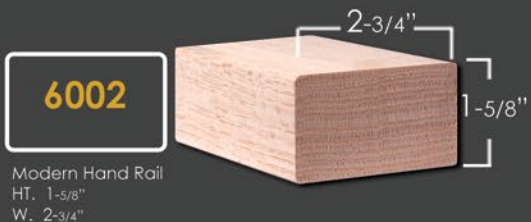
Shown with optional base and cove cap (sold separately)



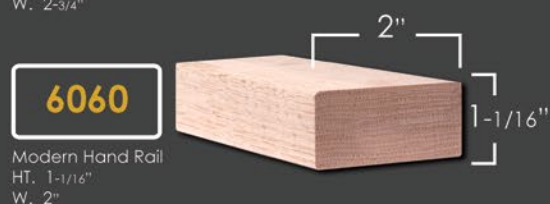
## HANDRAIL



**6084** Straight Rail  
**6084-B** Bending Rail  
Available in 8' & 16'  
no fittings available



**6002** Straight Rail  
Available in 8' & 16'  
no fittings available



**6060** Straight Rail  
Available in 8' & 16'  
no fittings available

## WALL RAIL BRACKET

1-1/4" x 2-3/8" Mounting Plate  
3" Extension From Wall



**HFBC.3002** (BRUSHED CHROME)  
**HFCV.3002** (COPPER VEIN)  
**HFORB.3002** (OIL RUBBED BRONZE)  
**HFORC.3002** (OIL RUBBED COPPER)  
**HFPB.3002** (POLISHED BRASS)  
**HFSC.3002** (SATIN CLEAR)  
**HFSP.3002** (SILVER VEIN)  
**HFAG.3002** (ASH GREY)  
**HFSTB.3002** (SATIN BLACK)

## HANDRAIL BRACKET

2-1/16" Rd. Mounting Plate  
3" Extension From Wall



**HFBC.3003** (BRUSHED CHROME)  
**HFGD.3003** (DORADO GOLD)  
**HFAN.3003** (ANTIQUE NICKEL)  
**HFCE.3003** (CHROME)  
**HFNL.3003** (NICKEL)  
**HFCV.3003** (COPPER VEIN)  
**HFORB.3003** (OIL RUBBED BRONZE)  
**HFORC.3003** (OIL RUBBED COPPER)  
**HFPB.3003** (POLISHED BRASS)  
**HFSC.3003** (SATIN CLEAR)  
**HFSP.3003** (SILVER VEIN)  
**HFAG.3003** (ASH GREY)  
**HFSTB.3003** (SATIN BLACK)

## NEWEL MOUNT HANDRAIL BRACKET



mounting hardware included



**HF17.4001**  
Stainless Steel(304)  
HT. 1-3/4"  
Base = 1-1/2" sq.  
**ADJUSTABLE**

**HFSTB17.4001**  
Satin Black  
HT. 1-3/4"  
Base = 1-1/2" sq.  
**ADJUSTABLE**

## WALL RAIL BRACKET



mounting hardware included



**HF17.4002**  
Stainless Steel(304)  
HT. 2-1/2"  
Base = 1-1/2" x 2"  
Extends 3-1/4" off wall  
**ADJUSTABLE**

**HFSTB17.4002**  
Satin Black  
HT. 2-1/2"  
Base = 1-1/2" x 2"  
Extends 3-1/4" off wall  
**ADJUSTABLE**

## ROSETTES



**RO-7033**  
4"x 5-1/2"  
(Red Oak)



**RO-7037**  
4"x 5-1/2"  
(Red Oak)



**RO-7039**  
4"x 4"  
(Red Oak)



# MODERN REMODEL TREAD & RISER KITS

- Get the look of thick block style treads at a fraction of the price!
- Replace old carpeted stairs
- Can be used on new construction

## REMODEL TREAD WITH RISER KIT

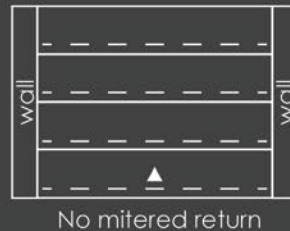
**TREAD** 2-1/8" Red Oak Tread w/roundover  
11/16" x 10-1/2" x 42, 54, 60"

**RISER** Red Oak Riser  
5/8" x 7-1/2" x 42, 54, 60"



Reversible riser material for stain or paint.

MODERN-RETRO-42  
MODERN-RETRO-54  
MODERN-RETRO-60



2-1/8" THICK  
RED OAK

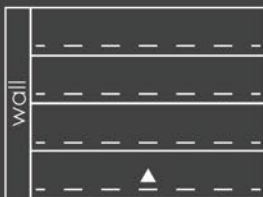
## REMODEL RETURN TREAD WITH RISER KIT

**TREAD** 2-1/8" Red Oak Tread w/roundover  
Mitered return on both ends  
11/16" x 10-1/2" x 48, 54, 60"

**RISER** Red Oak Riser  
5/8" x 7-1/2" x 48, 54, 60"



Mitered return on  
left and right



Mitered return on right



Mitered return on left

MODERN-RETRO-48MR  
MODERN-RETRO-54MR  
MODERN-RETRO-60MR

2-1/8"



ITALY • USA  
DESIGN COLLABORATIVE

# FOUNDATION<sup>TM</sup>

BALUSTERS





# SOHO | BALUSTRADE

## balusters

SATIN BLACK - (Powder coated)

**HFSTB16.8.1** Diameter : 5/8" Rd. Tubular Length: 44" Wt. 1.35 lbs.

BRASS (Satin Polish - Passivated)

**HF18.8.1** Diameter : 5/8" Rd. Tubular Length: 44" Wt. 1.45 lbs.

STAINLESS STEEL (Satin Polish - 304 Grade)

**HF17.8.1** Diameter : 5/8" Rd. Tubular Length: 44" Wt. 1.2 lbs.



## bases

SATIN BLACK - (Powder coated)

**HFSTB16.4.1** Diameter : 20mm Rd. Length: 8" Wt. .3 lbs.

BRASS (Satin Polish - Passivated)

**HF18.4.1** Diameter : 20mm Rd. Length: 8" Wt. .35 lbs.

STAINLESS STEEL (Satin Polish - 304 Grade)

**HF17.4.1** Diameter : 20mm Rd. Length: 8" Wt. .3 lbs.



Replacement set screws  
Satin Black, Brass, Stainless Steel

Passivated to minimize tarnishing, use gloves when handling



S1

Handrail: 6084  
Newels:  
Starting: 5400 (Shown w/ optional BASE-5000)  
Intermediate: 4400 (Shown w/ optional BASE-4000)  
Balusters: HF17.8.1 w/ HFSTB16.4.1 base



S2

Handrail: 6084  
Newels:  
Starting: 5900  
Intermediate: 4900  
Balusters: HF18.4.1 w/ HFSTB16.4.1 base



S3

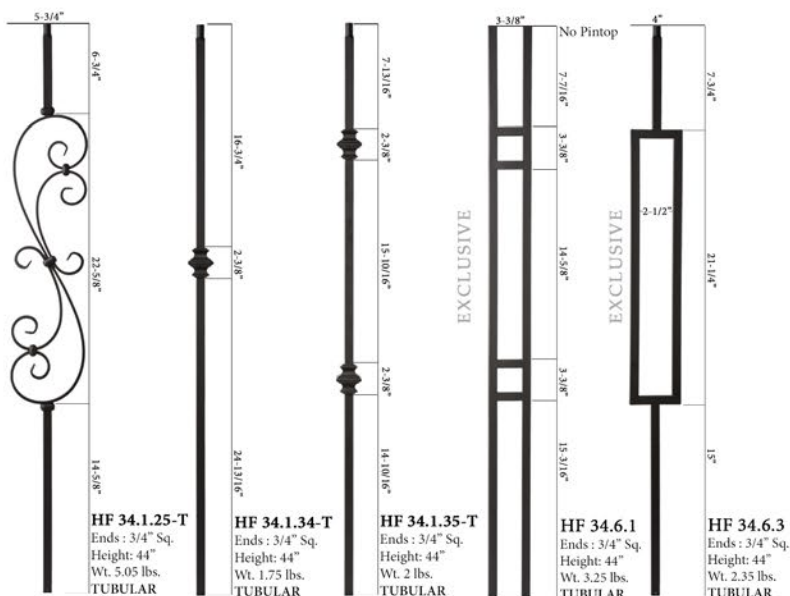
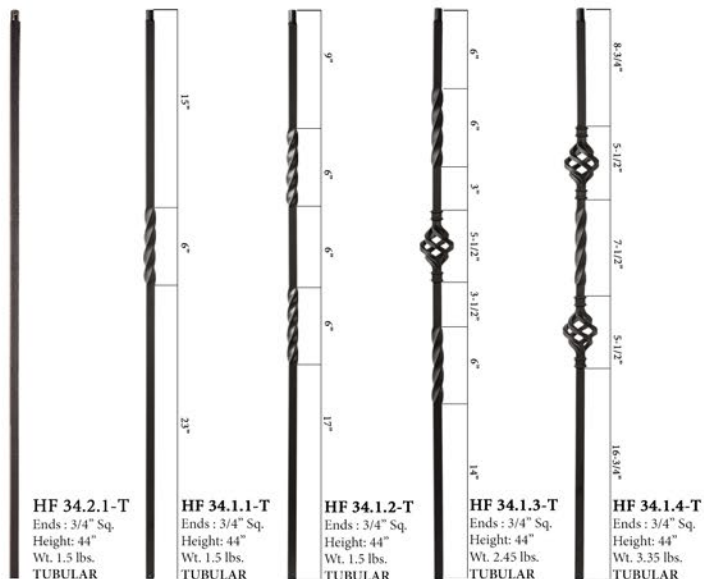
Handrail: 6084 Newels: Starting: 5000 (Shown w/ optional COVE CAP-5000)  
Intermediate: 4000 (Shown w/ optional COVE CAP-4000)

Balusters: HFSTB16.8.1 w/ HF18.4.1 base



# MEGA<sub>COLLECTION</sub>

Our most popular designs in a grand size



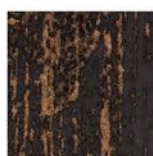
**Tubular Bar Specifications**  
Superior 18 gauge wall thickness  
(1/20" / 1.27mm)



**Pintop**  
Diameter: 5/8"  
Height: 3/4"



SATIN  
BLACK (STB)



OIL RUBBED  
BRONZE (ORB)

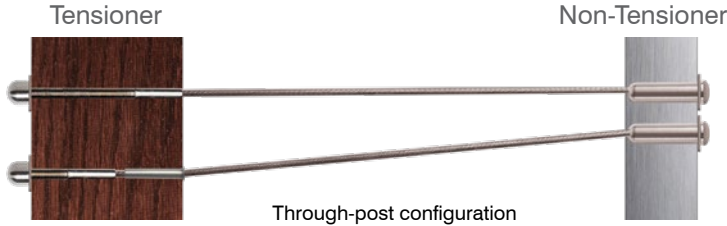


ASH GREY (AG)





## SWAGED CABLE INFILL KITS FOR WOOD OR METAL POSTS

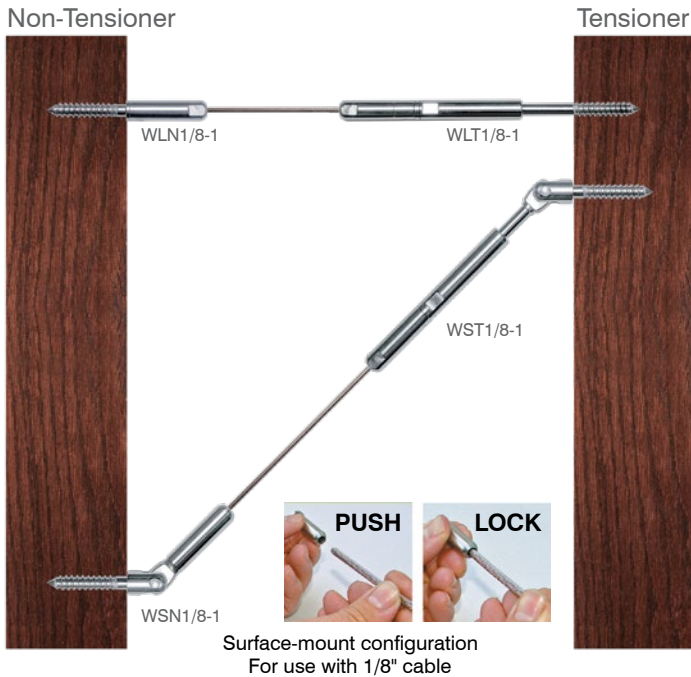


Pre-assembled kit includes fittings and factory swaged cable in lengths 5'-25'

Outside to outside - Level/balcony or angle/stair

<b>HFC18.102-5</b>	5'	.15 kgs (.331 lbs)
<b>HFC18.102-10</b>	10'	.227 kgs (.5 lbs)
<b>HFC18.102-15</b>	15'	.303 kgs (.669 lbs)
<b>HFC18.102-20</b>	20'	.383 kgs (.844 lbs)
<b>HFC18.102-25</b>	25'	.549 kgs (1.2 lbs)

## SWAGELESS CABLE INFILL FOR WOOD POSTS



Inside to inside - Level/balcony or angle/stair

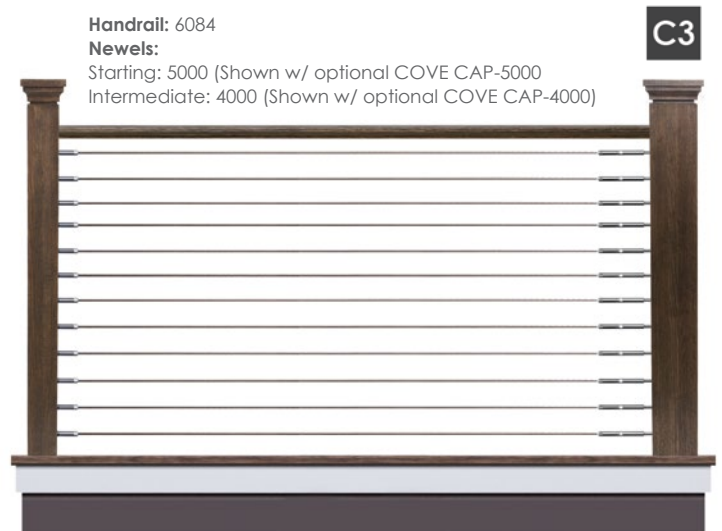
<b>WLN1/8-1</b>	Wood Level Non Tensioner	.04 kgs (.092 lbs)
<b>WLN1/8-10</b>	Wood Level Non Tensioner(10 pack)	.31 kgs (.693 lbs)
<b>WLT1/8-1</b>	Wood Level Tensioner	.07 kgs (.173 lbs)
<b>WLT1/8-10</b>	Wood Level Tensioner(10 pack)	.68 kgs (1.5lbs)
<b>WSN1/8-1</b>	Wood Stair Non Tensioner	.06 kgs (.135 lbs)
<b>WSN1/8-10</b>	Wood Stair Non Tensioner(10 pack)	.5 kgs (1.12 lbs)
<b>WST1/8-1</b>	Wood Stair Tensioner	.09 kgs (.217 lbs)
<b>WST1/8-10</b>	Wood Stair Tensioner(10 pack)	.88 kgs (1.94 lbs)



<b>UTCABLE100-4</b>	100' coil - 1/8" 1X19 type 316 S/S cable	2.07 kgs (4.56 lbs)
<b>UTCABLE500-4</b>	500' spool - 1/8" 1X19 type 316 S/S cable	10.02 kgs (22.1 lbs)

1x19 Cable(1/8" 316)

## — Stainless Steel — Cable Railing





# HORIZONTAL RAILING

SATIN BLACK

**HFSTB5.1.1**

Powder Coated Tubular Round Bar 5/8" Dia. x 8'

OIL RUBBED BRONZE **HFORB5.1.1**

Powder Coated Tubular Round Bar 5/8" Dia. x 8'

ASH GREY

**HFAG5.1.1**

Powder Coated Tubular Round Bar 5/8" Dia. x 8'

COASTAL WHITE

**HFWHT5.1.1**

Powder Coated Tubular Round Bar 5/8" Dia. x 8'

STAINLESS STEEL

**HFSS5.1.1**

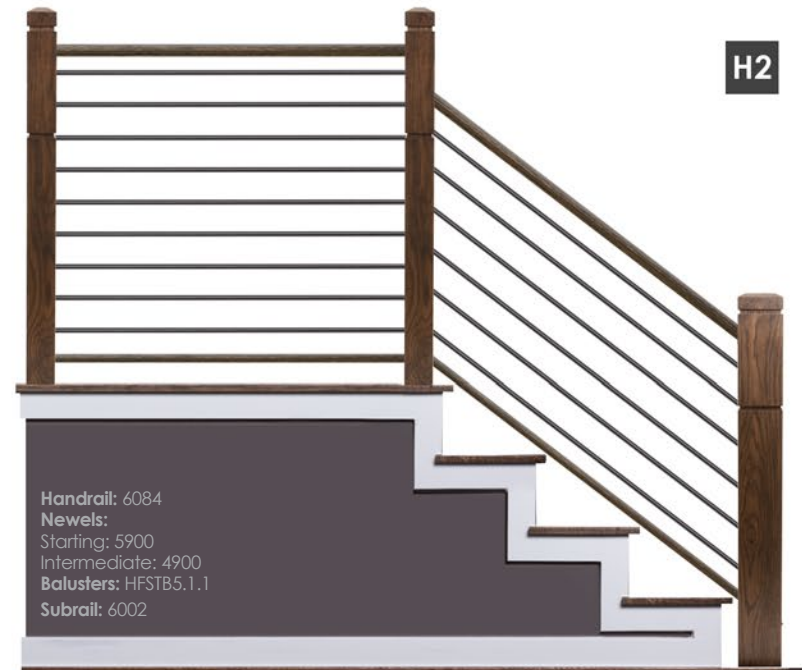
304 Grade Stainless Steel Round Bar 5/8" Dia. x 8'

Our tubular bar is made with superior 12 gauge (2mm / 5/64") stock for minimal deflection

**H1**



**H2**



**H3**







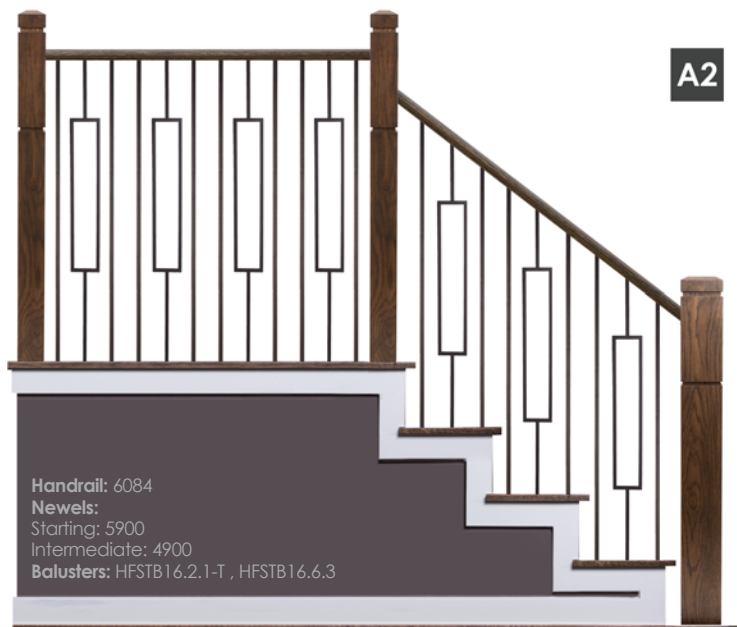
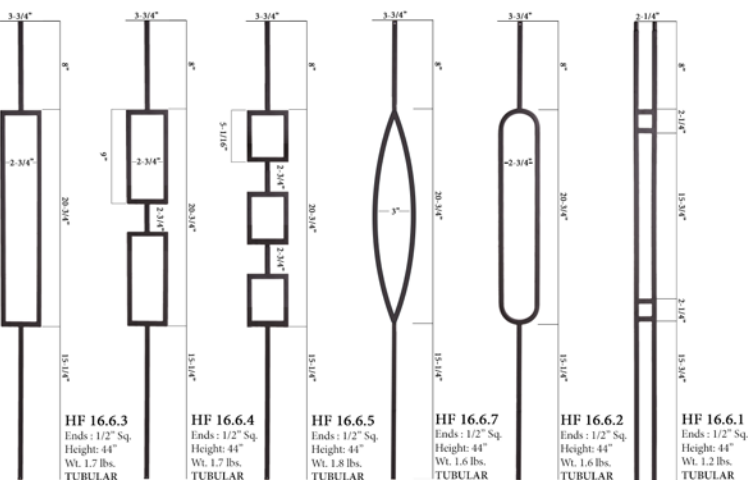
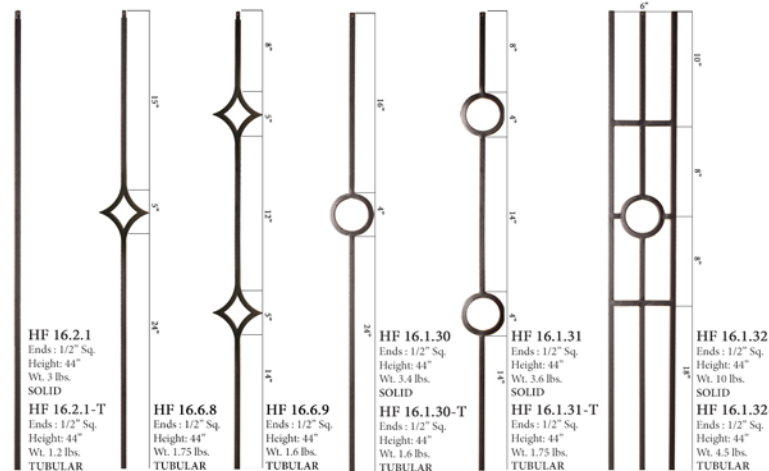
## WENTWORTH COLLECTION



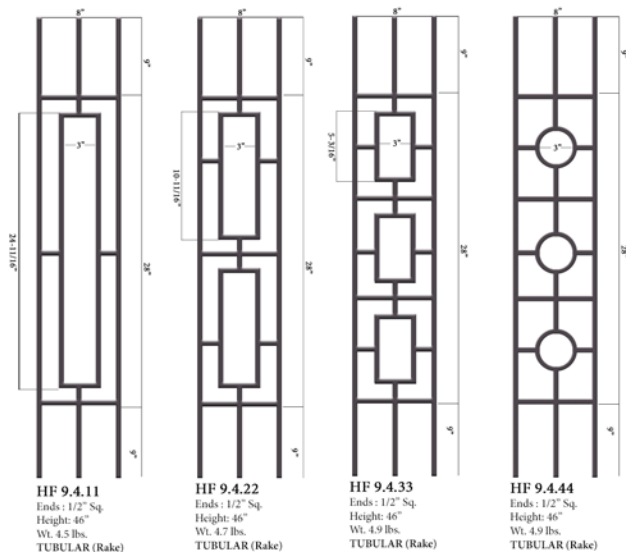


# SIMPLY MODERN

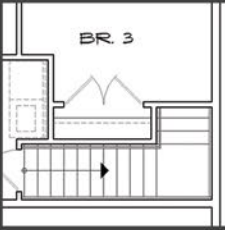
Bring modern design into your home with  
**Aalto Collection**



Panels fit all angles up to 40 degrees







## Estimating Services

We offer full estimation services based on your field drawings or plans. Whether you need help determining quantities or need a fully custom quote we have you covered. Full CAD rendering of staircases, balconies and components is available also.



## Sales & Marketing Support

Our wide variety of sales displays will provide you with the tools to sell products. We have sizes to fit your floor space as well as custom displays. We offer a wide array of marketing literature designed to support product sales: product catalogs, brochures, flyers, postcards and customized literature are available through our authorized dealer program.



## Domestic & Exotic Wood Species

All wood products are stocked in Red Oak(RO) and Prefinished White(PG) unless otherwise noted. Our entire FORESTKRAFT line is also available in stock in White Oak(WO).

Additional domestic and exotic species are available through our special order program, lead times apply.



## AXIA - Stair & Railing Systems

We offer the most in-demand, high quality stainless steel stair & railing systems at the lowest price possible. From day one, we set out to do things a little bit different. Our goal has always been to provide stainless systems that are ideal for the residential stair installer/builder while also surpassing the expectations of the most discerning homeowners.



## Customization Options - Euro Forge Manufacturing

We manage your fabrication project from start to finish, offering design services, estimation, project management and quality assurance. We take the hassle out of your project, leaving you more time and resources to focus on satisfying your customers with impeccable end results.

Together with our Italian factory we bring your vision to reality. Whether you have a simple inspiration photo or detailed drawings of a single element or entire staircase we specialize in a full range of manufacturing options ideally suited to exceed your expectations.

Forging - Casting - Stamping - Bending - Rolling - Laser Cutting

Stair Parts - Decorative Panels - Window Coverings - Furniture Components - & More



## In Stock - Ready to Ship

We manufacture over 2000 active SKUs housed in over 200,000 sq. ft of warehouse space with a national distribution network that ships to you in under 24 hours.

STAIR & RAILING PRODUCTS BY





