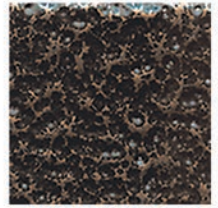


SUMMER CLEARANCE

SAVE UP TO
60% OFF

Offer good while supplies last!

COPPER VEIN(CV)



<p>HFCV16.1.2 Ends : 1/2" Sq. Height: 44" Wt. 3 lbs. SOLID</p>	<p>HFCV16.1.4 Ends : 1/2" Sq. Height: 44" Wt. 4 lbs. SOLID</p>	<p>HFCV16.2.1 Ends : 1/2" Sq. Height: 44" Wt. 3 lbs. SOLID</p>	<p>HFCV16.1.26 Ends : 9/16" Sq. Height: 44" Wt. 4 lbs. SOLID</p>	<p>HFCV16.1.27 Ends : 9/16" Sq. Height: 44" Wt. 4.5 lbs. SOLID</p>	<p>HFCV2.9.28 Ends : 9/16" Sq. Height: 44" Wt. 3.2 lbs. SOLID</p>	<p>HFCV2.9.27 Ends : 9/16" Sq. Height: 44" Wt. 4.2 lbs. SOLID</p>	<p>HFCV2.9.8 Ends : 9/16" Sq. Height: 44" Wt. 5.2 lbs. SOLID</p>
---	---	---	---	---	--	--	---

<p>RO-4140 HT. 48" W = 3"</p>	<p>RO-4160 HT. 54" W = 3"</p>	<p>RO-4170 HT. 54" W = 3"</p>	<p>RO-5015-43 HT. 43" W = 1-1/4"</p>
--	--	--	---

RED OAK(RO)

<p>RO-5015-36 HT. 36" W = 1-1/4"</p>	<p>RO-5015-41 HT. 41" W = 1-1/4"</p>
<p>RO-5015-43 HT. 43" W = 1-1/4"</p>	



6710
Prestige Hand Rail
HT. 2-3/4"
W. 2-5/8"

RO-6713-16



16' Bending Rail (Red Oak)

Call or email your sales representative for full pricing details

866.443.4848

www.houseofforgings.net



HFCV16.1.2
 Ends : 1/2" Sq.
 Height: 44"
 Wt. 3 lbs.
 SOLID



HFCV16.1.4
 Ends : 1/2" Sq.
 Height: 44"
 Wt. 4 lbs.
 SOLID



HFCV16.2.1
 Ends : 1/2" Sq.
 Height: 44"
 Wt. 3 lbs.
 SOLID



HFCV16.1.26
 Ends : 9/16" Sq.
 Height: 44"
 Wt. 4 lbs.
 SOLID



HFCV16.1.27
 Ends : 9/16" Sq.
 Height: 44"
 Wt. 4.5 lbs.
 SOLID



HFCV2.9.28
 Ends : 9/16" Sq.
 Height: 44"
 Wt. 3.2 lbs.
 SOLID



HFCV2.9.27
 Ends : 9/16" Sq.
 Height: 44"
 Wt. 4.2 lbs.
 SOLID



HFCV2.9.8
 Ends : 9/16" Sq.
 Height: 44"
 Wt. 5.2 lbs.
 SOLID